

# Welcome!

# Product Lines

- Wall Mount Racks
- Server Cabinets
- Technical Furniture
- PC Security
- Rack Accessories



# Core Values

- Made in America
- Same day shipping
  - Built to order products: 1-5 day lead time
- Limited lifetime warranty
- Quality you can trust



# Performance Series®

- **Functionality**
  - Modular design
  - Customizable
  - Five styles (100/200/300/400/Corner)
  - Four sizes (24"/48"/72"/96")
  - Five stunning finishes



# Performance Series®

- Applications

- Tech Benches
- Imaging Stations
- Computer Repair
- Network Lab
- Assembly Benches
- Security/Command Consoles
- Home Office



# Performance Plus®

- **Functionality**
  - Modular design
  - Customizable
  - Weight capacity: 850 lbs. per shelf
  - Gangable design
  - Build Your Own & Pre-Configured Options



# Performance Plus®

- Applications
  - Call Centers
  - Assembly Stations
  - IT Work Space
  - Tech Benches



# Advanced Classroom Training Tables

- Four widths (36"/48"/60"/72")
- Two depths (24"/30")
- Adjustable height
- Five stunning finishes





# Transform your room!

...to a galaxy far, far away...



# LINIER<sup>®</sup> Server Cabinets

**PICK YOUR DEPTH**

**PICK YOUR HEIGHT**

**PICK YOUR DOOR TYPES**  
COMBINATIONS OF GLASS, SOLID, VENTED, CONVEX, NO DOORS, NO SIDES



- **Features**

- Four sizes (22U/27U/37U/42U)
- Two depths (24" & 36")
  - 24" depth ideal for A/V
- Four door options
  - Glass, Solid, Vented, Convex
  - No doors, no sides available
- Two rail options

# LINIER® Wall Mount Cabinets

- Two styles
  - Fixed & Swing-Out Cabinets
  - Six sizes (6U/9U/12U/15U/18U/22U)
  - Three door options
    - Glass, Solid, Vented
  - Two rail options



Lockable  
Cabinet



Adjustable  
Cage Nut  
Style Rails



Removable/  
Lockable  
Side Panels



Fan  
Cut Outs



Cable  
Slots

# Wall Mount Racks

- Various Styles
  - Modular
  - V-Line
  - Side Load
  - Swing-Out
  - Pivot Frame



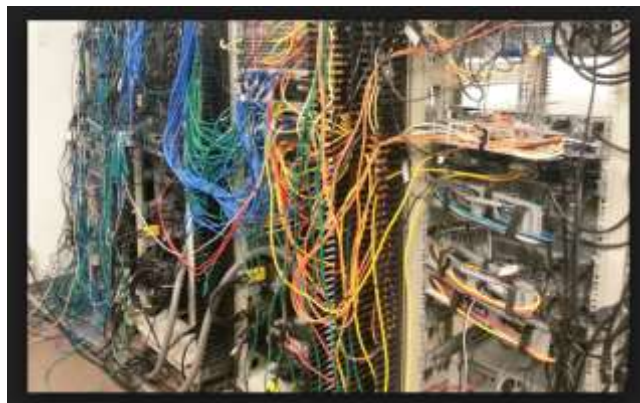
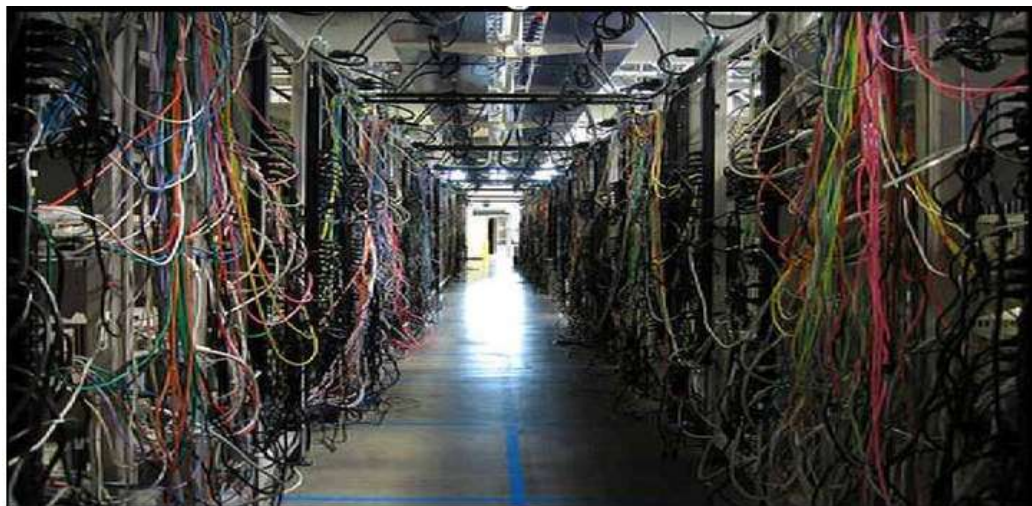
# Phantom Class® Corner Wall Mount Cabinet

- Geometric design – mounts in the corner
- 650 lb. load capacity
- Removable, lockable access panels
- Reversible lift-off door
- Open back design
- Top and bottom knockouts
- 17.5” usable depth (27” actual depth)

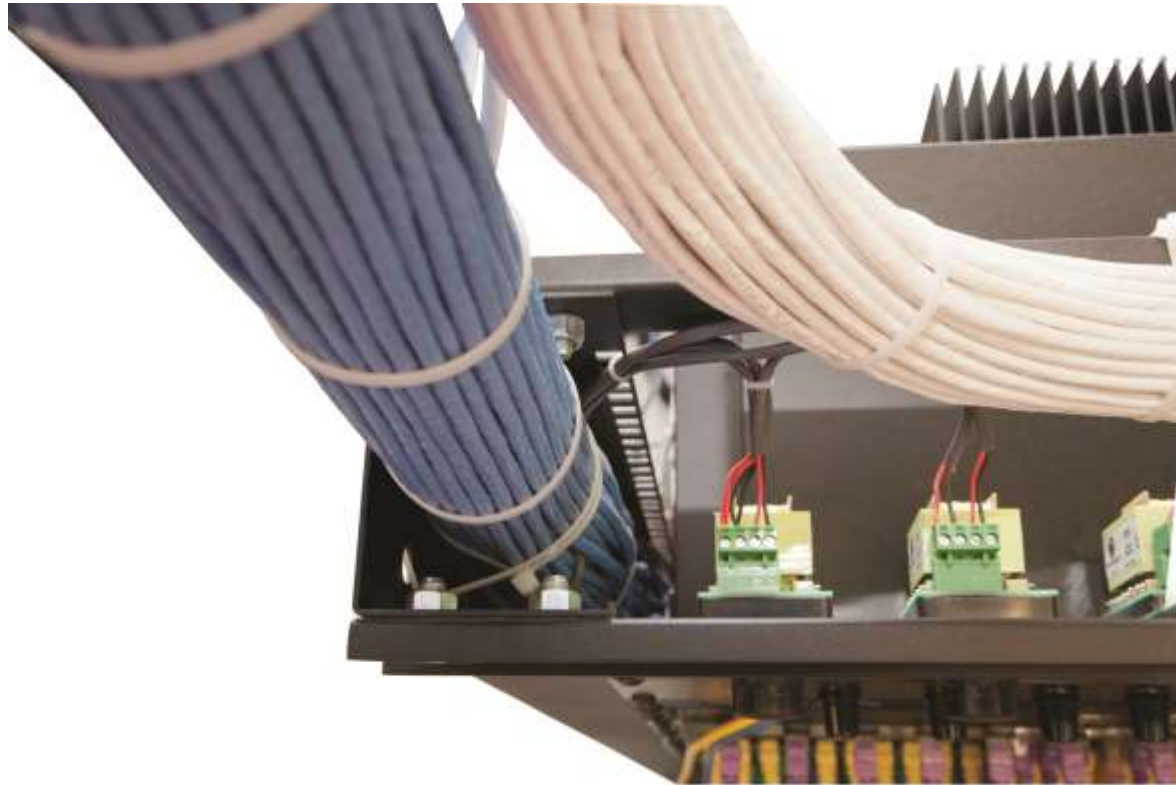




# Look familiar?!

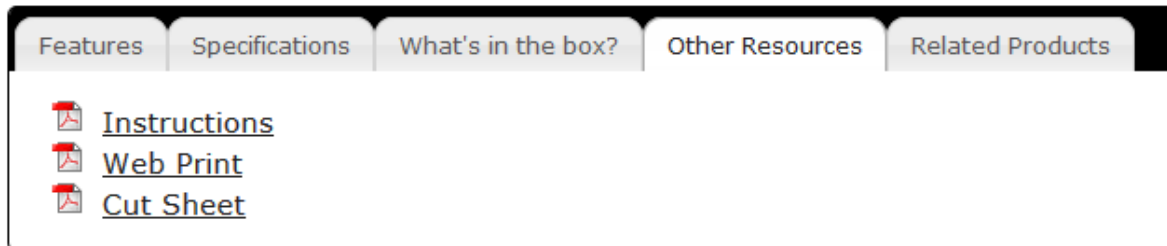


We can help fix that problem!



# Why Kendall Howard?!

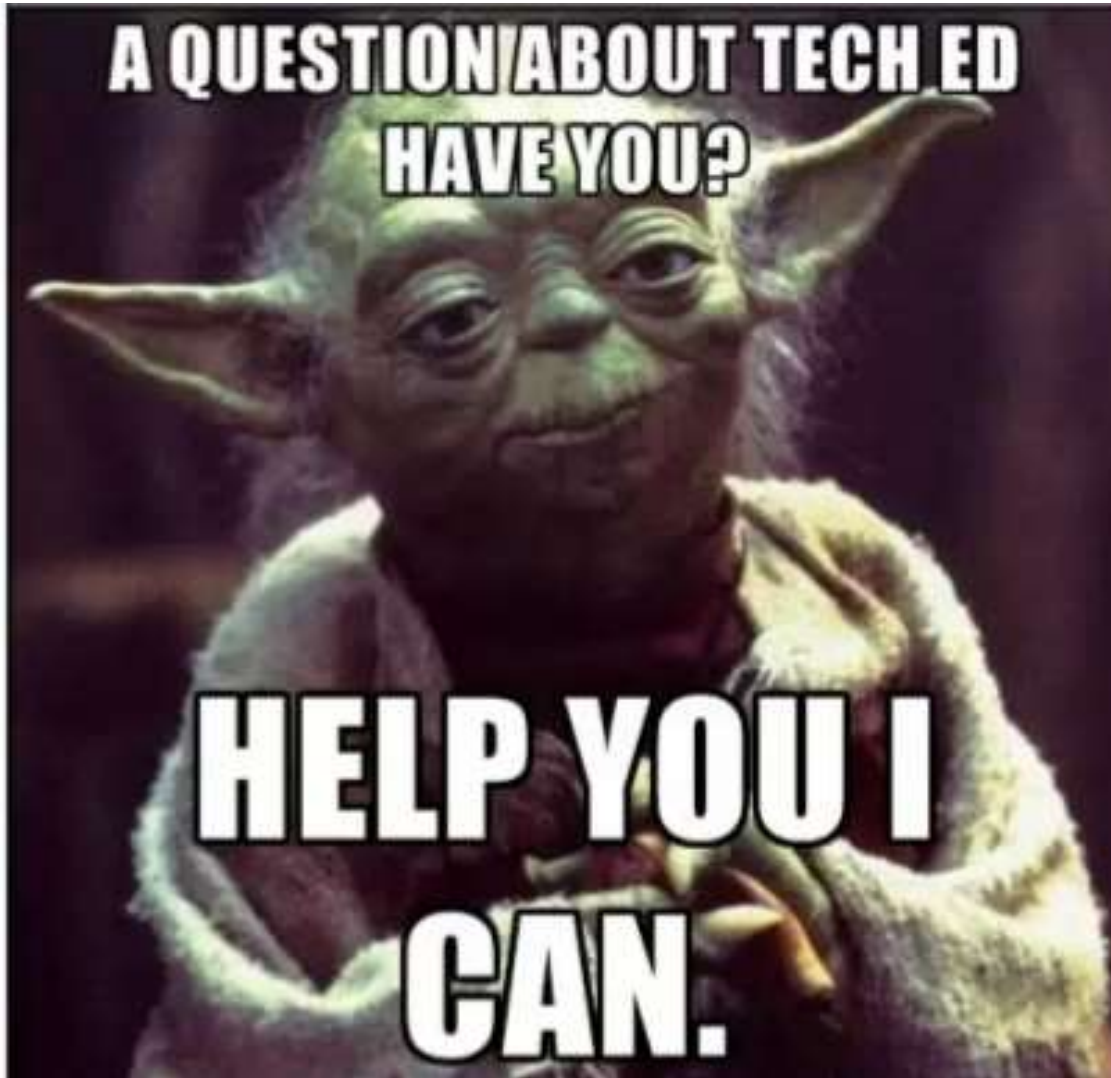
- Competitive advantages
  - American made products
  - Short lead times
  - Superior quality
  - We spec our products.
  - Online resources available





# Quick recap

- American made products
- Five product lines
  - Highlighted today:
    - Technical Furniture
    - Server Cabinets
    - Wall Mount Racks
- We can help fix the cable chaos!



Thank you!